

---

# Magneto

---

Liquid Purification

---

Ultra-fine magnetic  
separation system



---

# Magneto

Magneto is an ultra-fine magnetic separation system that is simple enough to be easily adapted and customized.

It is made entirely from AISI 304 stainless steel and has permanent neodymium magnetic elements with a strength of 5000 Gauss.

Losma guarantees that each purifier is tested through strict control procedures. A quality and functional test certificate is issued for each unit.

---

# Operation

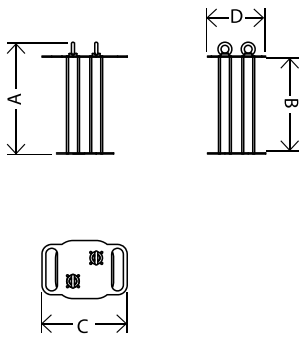
When Magneto is inserted into an area near the pump in the clean coolant tank, filtration takes place as the fluid passes through it. High filtrations levels are achieved by channelling the fluid longitudinally with simple partitions.

Magneto is very easy to clean, just remove the bars from their seats and drain the sludge into a suitable container.

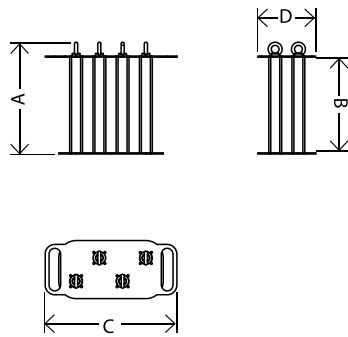


# Technical Data

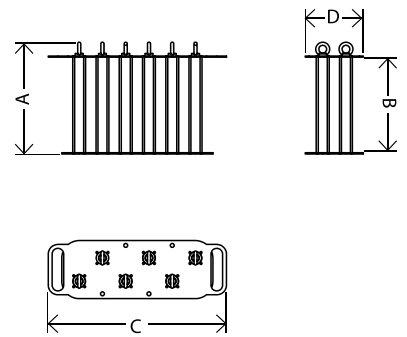
MAGNETO 250/2



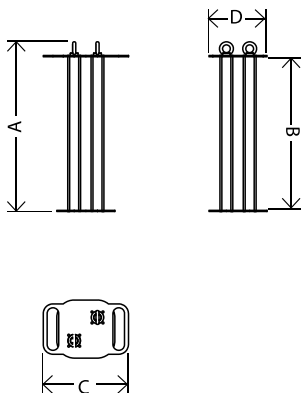
MAGNETO 250/4



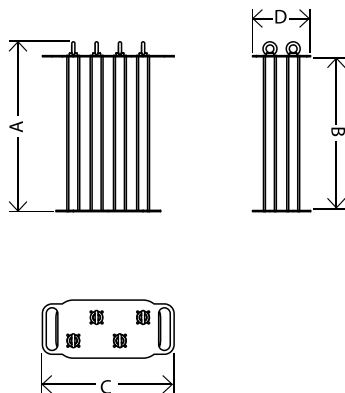
MAGNETO 250/6



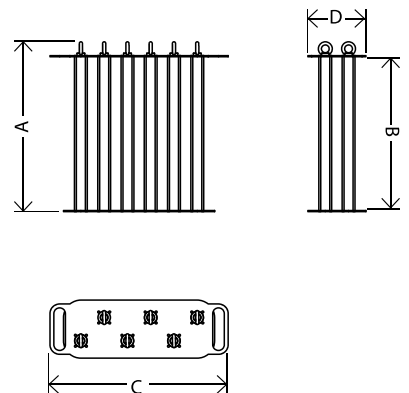
MAGNETO 400/2



MAGNETO 400/4



MAGNETO 400/6



# 1. Serie 250

250 SERIES	Dimensions (mm)				Indicative flow rate (l/h)	Indicative tank capacity (l)	Weight (Kg)
	A	B	C	D			
Magneto 250/2	300	250	220	150	50 - 150	100 - 500	5
Magneto 250/4	300	250	340	150	50 - 150	100 - 500	10
Magneto 250/6	300	250	460	150	50 - 150	100 - 500	15

# 2. Serie 400

400 SERIES	Dimensions (mm)				Indicative flow rate (l/h)	Indicative tank capacity (l)	Weight (Kg)
	A	B	C	D			
Magneto 400/2	450	400	220	150	150-300	500 - 1000	15
Magneto 400/4	450	400	340	150	150-300	500 - 1000	20
Magneto 400/6	450	400	460	150	150-300	500 - 1000	25